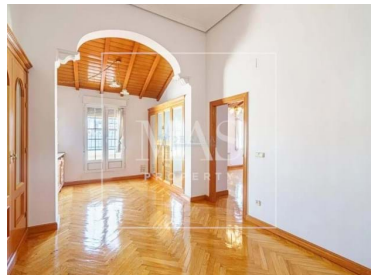
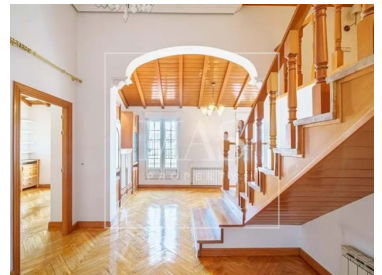




Madrid - Penthouse



Bedrooms



Bathrooms



Area (m²)

2 700 000 €

(EUR €)

Beautiful 6 Bedroom Penthouse in Sol

Step inside and be greeted by the timeless charm of this penthouse, built in the year 1880. Take the lift up to the top floor and step out onto the terrace, where sun loungers await to provide a perfect spot for relaxation and taking in the vibrant city views.

Located just a stone's throw away from the Sol subway station, you'll have effortless access to all of Madrid's iconic landmarks and attractions. Immerse yourself in the dynamic energy of the city, with a plethora of dining options just minutes away. From mouthwatering pizzas to international cuisine, there's something to tantalize every palate.

If you're looking for a peaceful retreat, discover the nearby nature spots such as the Jardines de Lepanto or charming view points like Mural and calle de los cuchilleros. With 177 grocery stores nearby, you'll have everything you need to create culinary masterpieces at home.



Maximilian Stjernstrom

Real Estate Agent

+34673262123 · +34951203035

maximilian@masproperty.com

T +34 951560975 · T +34 951203035 · E info@maspropertymadrid.com

Calle del Mesón de Paredes, 1, 28012 Madrid Spain
AMI 010203

¹ (Call to national fixed network) | ² (Call to national mobile network)



MASM80691

Reference

Scan the QR code to view the property



This penthouse also offers easy access to amenities such as pharmacies and schools, ensuring a seamless and enriching lifestyle. Don't miss the opportunity to own a piece of Madrid's vibrant city life in this exquisite penthouse. Contact us today to schedule a viewing and make this stunning property your new home!

Property Features

- Terrace
- Lift
- Built year: 1880



Maximilian Stjernstrom

Real Estate Agent

+34673262123 · +34951203035

maximilian@masproperty.com

T +34 951560975 · T +34 951203035 · E info@maspropertymadrid.com

**Calle del Mesón de Paredes, 1, 28012 Madrid Spain
AMI 010203**

¹ (Call to national fixed network) | ² (Call to national mobile network)